

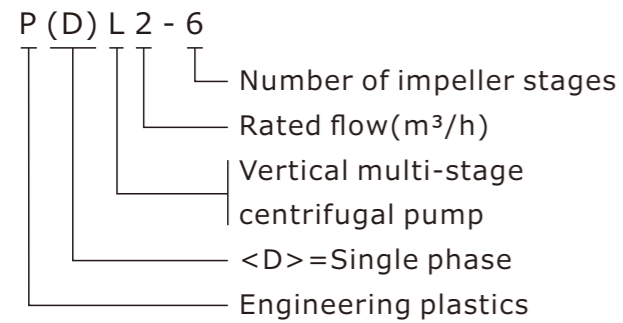
PDL

Vertical multi-stage centrifugal pump

PRODUCT DESCRIPTION

The P(D)L Series Vertical Multistage Centrifugal Pump (hereinafter referred to as the electric pump) complies with the Q/JN BD01 standard. The electric pump primarily consists of three components: a motor, a pump, and a seal. The motor is a single-phase or three-phase asynchronous motor, and the impeller features a centrifugal design. The pump and motor are equipped with a single-face seal, while the fixed flange uses an O-ring for radial sealing. This series of products is characterized by high efficiency, low noise, and smooth operation. The pump has a compact overall design, is easy to install, and offers convenient operation and maintenance.

MODEL DESCRIPTION



PRODUCT FEATURES

- Pump Body Material: HT250 SUS304
- Impeller Material: PPO+GF30
- Waterproof rating: IP55

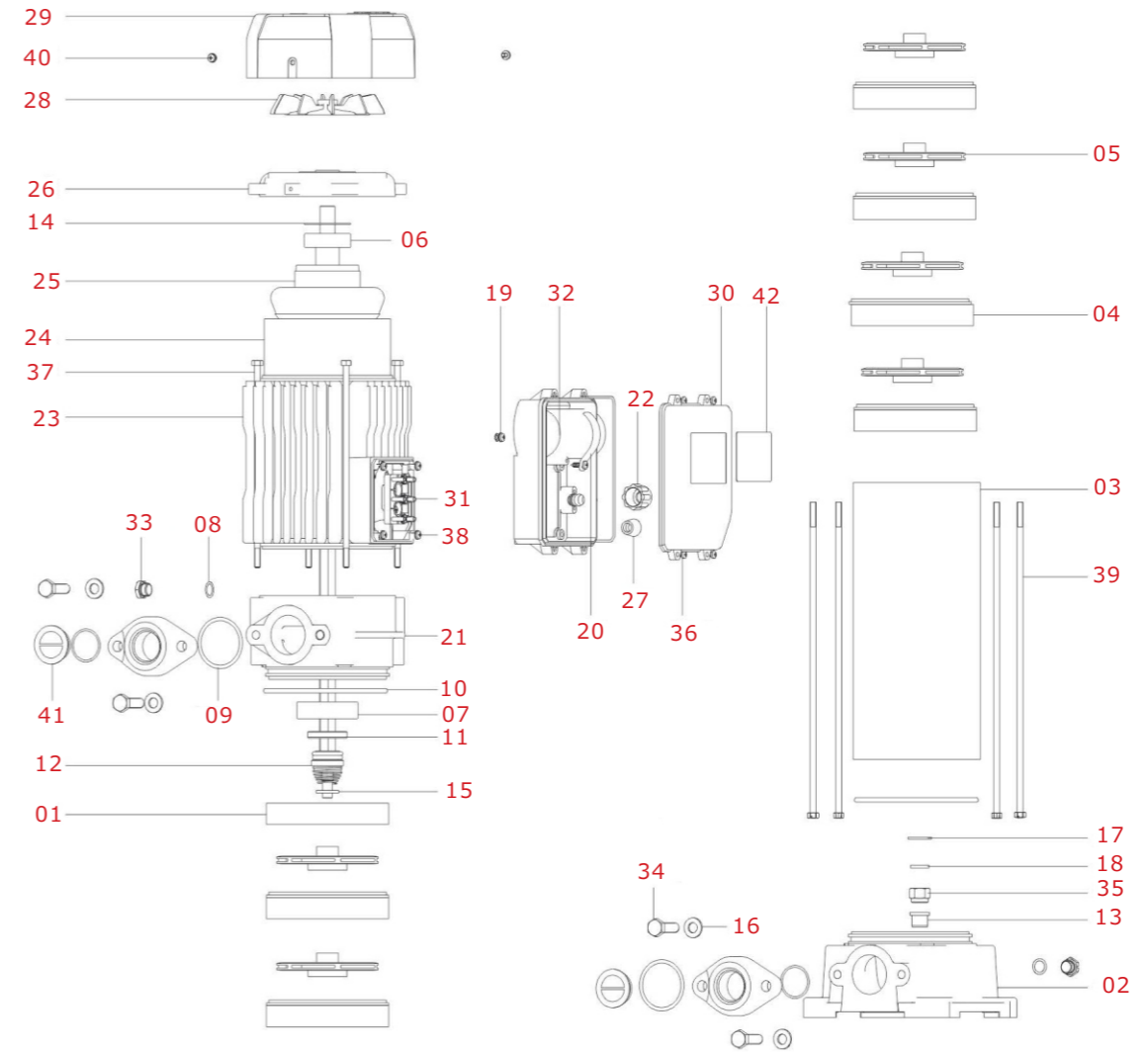
APPLICATION SCENARIOS

I. Main Application Areas

- High-rise buildings: Water supply, pipeline pressurization
- Water treatment plants: Filtration, conveyance
- System cleaning: Flushing, cleaning systems
- Boilers: Feedwater, cooling water circulation
- Water treatment: Ultrafiltration, reverse osmosis systems
- Equipment integration: Water-fertilizer integrated systems, etc.

II. Core Function Categories

- Water treatment systems
- Industrial pressurization
- Water-fertilizer integration
- Water supply systems
- Other pressurization systems

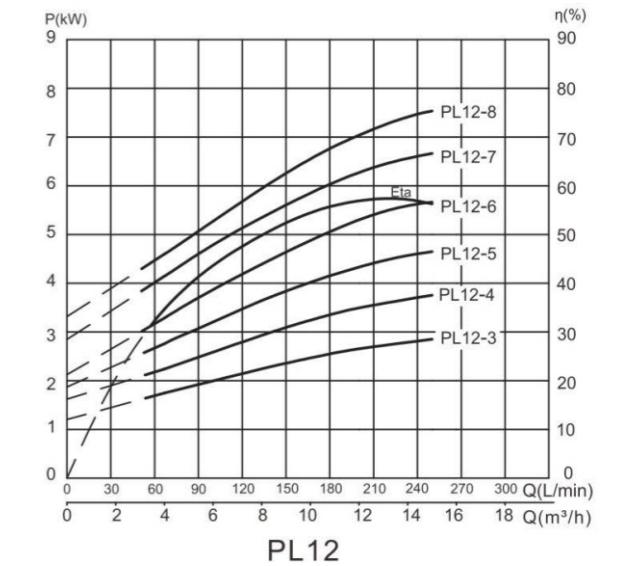
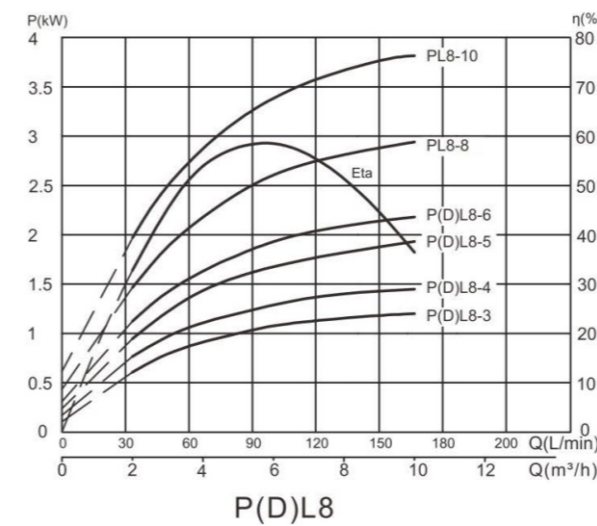
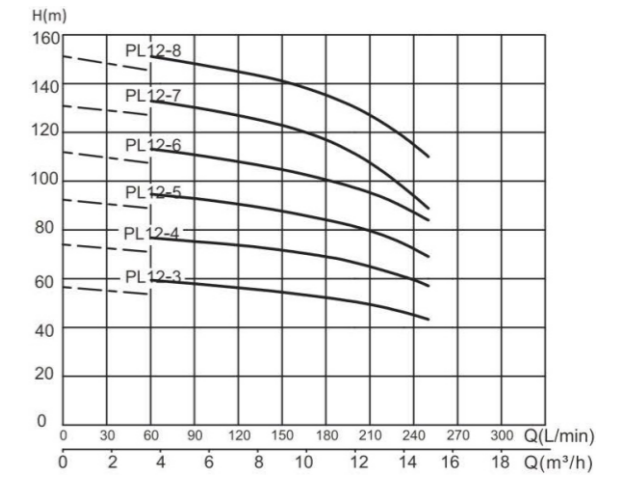
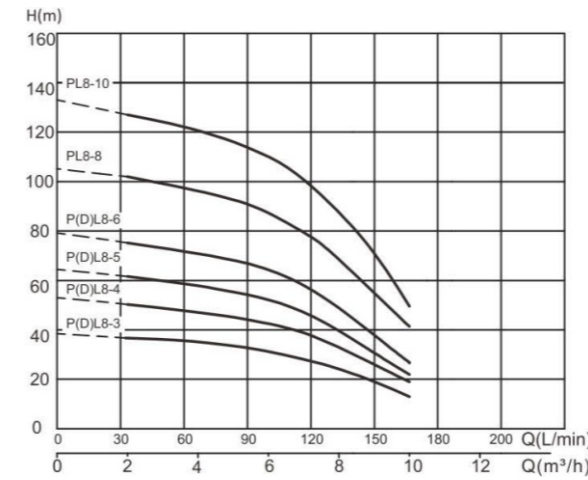
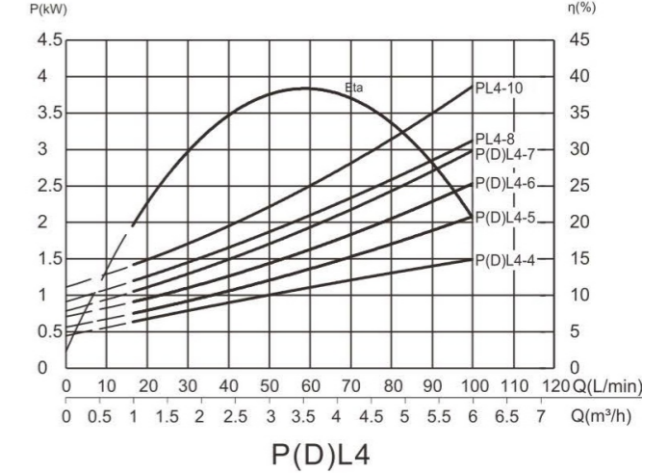
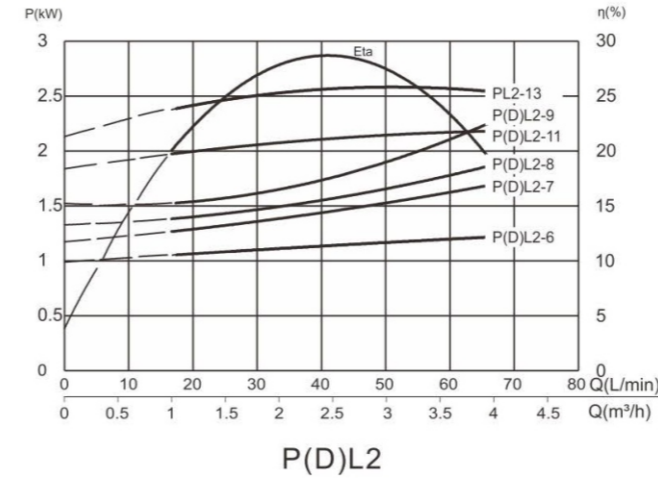
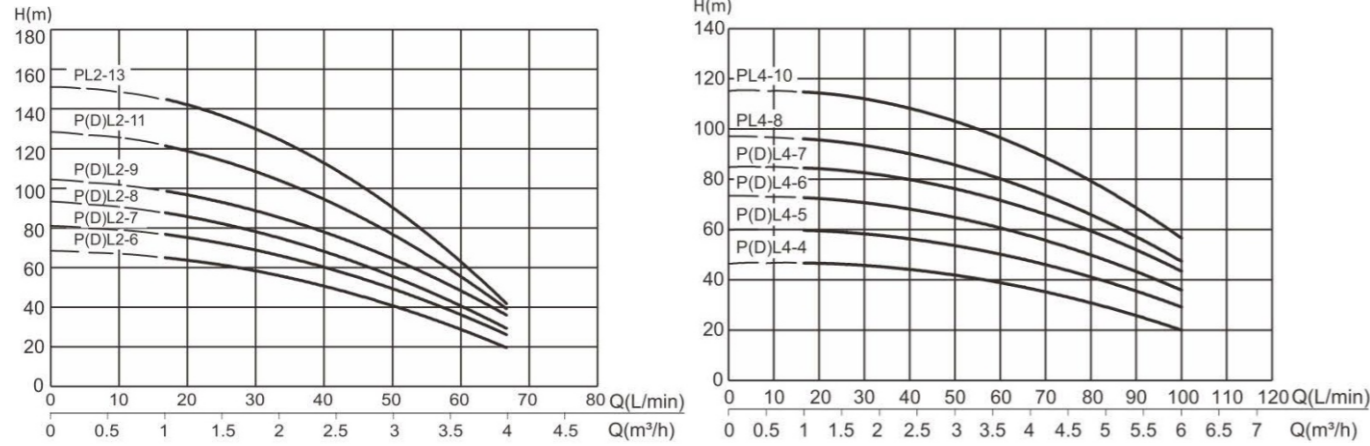


NO.	PART NAME	NO.	PART NAME	NO.	PART NAME
01	Final guide vane	15	Bearing sleeve	29	Fan shroud
02	Pump housing	16	Flat washer	30	Terminal box assembly
03	Pump casing	17	Flat washer	31	Terminal posts
04	Guide vane	18	Spring washer	32	Running capacitor
05	Impeller	19	External tooth locking washer	33	Venting valve
06	Deep groove ball bearing	20	Capacitor clip	34	Fully threaded hex head bolts
07	Deep groove ball bearing	21	Connecting piece	35	I-type hex nuts
08	O-ring	22	Cable lug	36	Phillips-head self-tapping screws
09	O-ring	23	Housing	37	Hex head bolts
10	O-ring	24	Wound stator core	38	Phillips-head flange screws
11	Skeleton oil seal	25	Rotor	39	Hex head bolts
12	Mechanical seal	26	Rear end cover	40	Phillips-head flange screws
13	Shaft sleeve	27	Cable sheath	41	Dust cover
14	Wave spring	28	Fan	42	Nameplate

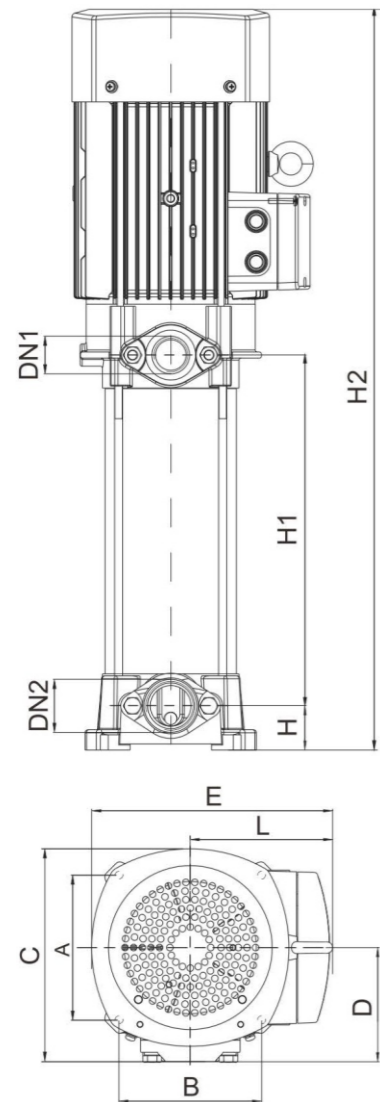
TECHNICAL PARAMETER

Model	Outlet (mm)	Motor power		Rated voltage (V)	Rated current (A)	Rated flow (m ³ /h)	Rated head (m)	Max. flow (m ³ /h)	Max. head (m)	Impeller passage (mm)
		(kW)	(HP)							
PDL2-6	25	1.1	1.5	220	7	2	53	4	69	-
PDL2-7	25	1.1	1.5	220	7.82	2	65.5	4	82	-
PDL2-8	25	1.5	2	220	9.5	2	73	4	94	-
PDL2-9	25	1.5	2	220	9.5	2	84	4	105	-
PDL2-11	25	1.8	2.5	220	11.3	2	102	4	130	-
PL2-6	25	1.1	1.5	380	2.5	2	53	4	69	-
PL2-7	25	1.1	1.5	380	2.5	2	65.5	4	82	-
PL2-8	25	1.5	2	380	3.4	2	73	4	94	-
PL2-9	25	1.5	2	380	3.4	2	84	4	105	-
PL2-11	25	1.8	2.5	380	4	2	102	4	130	-
PL2-13	25	2.2	3	380	4.8	2	122	4	153	-
PDL4-4	25	1.1	1.5	220	7	4	39	6	47	-
PDL4-5	25	1.5	2	220	9.4	4	48	6	61	-
PDL4-6	25	1.5	2	220	9.4	4	58	6	74	-
PDL4-7	25	1.8	2.5	220	11.3	4	69	6	86	-
PL4-4	25	1.1	1.5	380	2.5	4	39	6	47	-
PL4-5	25	1.5	2	380	3.4	4	48	6	61	-
PL4-6	25	1.5	2	380	3.4	4	58	6	74	-
PL4-7	25	1.8	2.5	380	4	4	69	6	86	-
PL4-8	25	2.2	3	380	4.8	4	77	6	98	-
PL4-10	25	2.2	3	380	4.8	4	96	6	116	-

PERFORMANCE CURVE



DIMENSIONS TABLE



DIMENSION & WEIGHT

Model	N.W. (mm)	G.W. (mm)	Packing dimension (mm)
PDL2-6	22	24	536*170*230
PDL2-7	23	25	560*170*230
PDL2-8	25	27.5	596*170*230
PDL2-9	26	28.5	620*170*230
PDL2-11	28	31	698*170*230
PL2-6	21	23	536*170*230
PL2-7	22	24	560*170*230
PL2-8	24	26	596*170*230
PL2-9	24	26	620*170*230
PL2-11	26	28.5	698*170*230
PL2-13	28	31	746*170*230
PDL4-4	21	23	488*170*230
PDL4-5	24	26	524*170*230
PDL4-6	24	26	548*170*230
PDL4-7	26	28.5	602*170*230
PL4-4	20	22	488*170*230
PL4-5	22	24	524*170*230
PL4-6	23	25	548*170*230
PL4-7	24	26	602*170*230
PL4-8	26	28.5	626*170*230
PL4-10	31	34	674*170*230

Model		Dn1	Dn2	H	H1	H2	A	B	C	D	E	L
Single phase	Three phase	(mm)	(mm)	(mm)	(mm)	(mm)	(mm)	(mm)	(mm)	(mm)	(mm)	(mm)
PDL2-6	PL2-6	G1	G1	43.5	224.5	536	128	85	170	85	230	145
PDL2-7	PL2-7	G1	G1	43.5	248.5	560	128	85	170	85	230	145
PDL2-8	PL2-8	G1	G1	43.5	272.5	596	128	85	170	85	230	145
PDL2-9	PL2-9	G1	G1	43.5	296.5	620	128	85	170	85	230	145
PDL2-11	PL2-11	G1	G1	43.5	344.5	698	128	85	170	85	230	145
PDL2-13	PL2-13	G1	G1	43.5	392.5	746	128	85	170	85	230	145
PDL4-4	PL4-4	G1	G1	43.5	176.5	488	128	85	170	85	230	145
PDL4-5	PL4-5	G1	G1	43.5	200.5	524	128	85	170	85	230	145
PDL4-6	PL4-6	G1	G1	43.5	224.5	548	128	85	170	85	230	145
PDL4-7	PL4-7	G1	G1	43.5	248.5	602	128	85	170	85	230	145
PDL4-8	PL4-8	G1	G1	43.5	272.5	626	128	85	170	85	230	145
PDL4-10	PL4-10	G1	G1	43.5	320.5	674	128	85	170	85	230	145